

IDM2 - DC Permanent Magnet (PMDC) Right Angle Gearmotor

Construction Features:

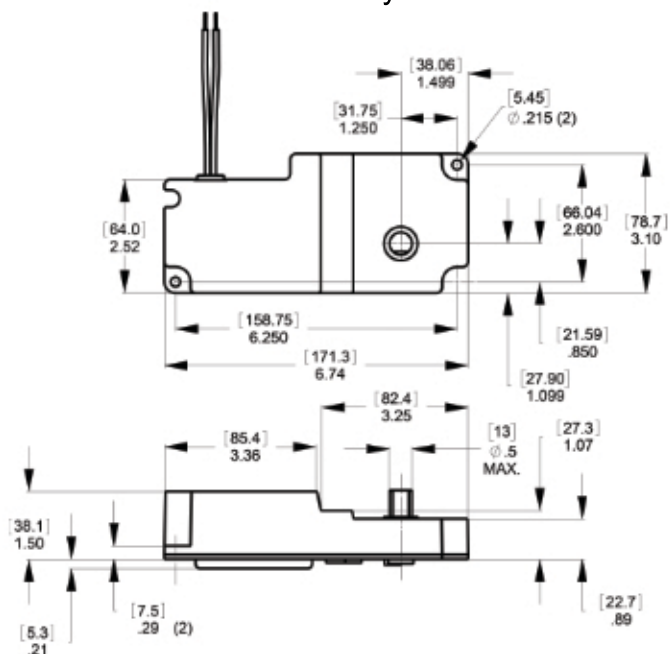
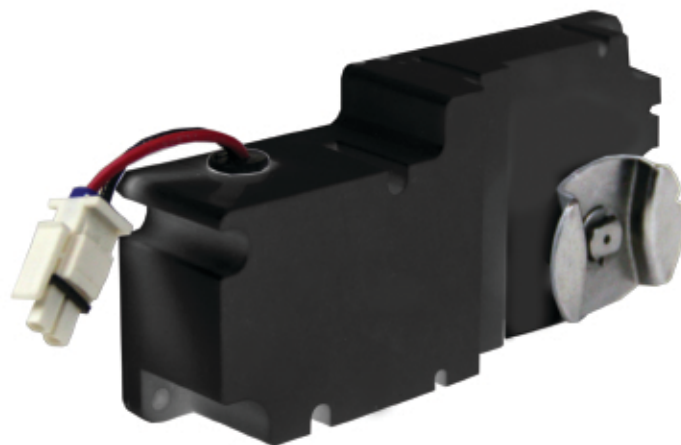
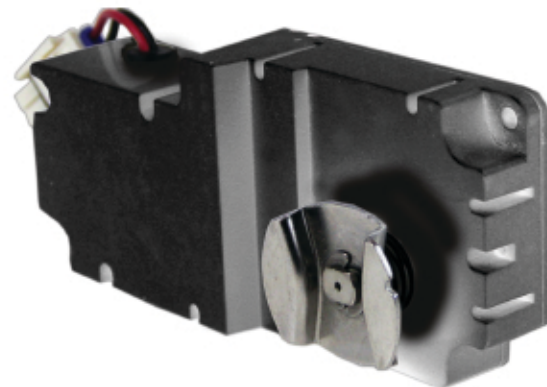
- Class B insulation
- Aluminum construction for strength and heat dissipation
- Ball bearings used for the motor and gearbox
- Reliable, low noise and long life
- Permanently grease lubricated gearbox
- Reversible
- Continuous duty

Applications:

- Office equipment
- Conveyor drive
- Valve actuators
- Food machinery
- Medical equipment
- Industrial machinery

Options:

- Output Shaft
- Leads
- Voltage/frequency
- Gearbox lubrication
- Motor shaft extension



CUL certified, IEC Break Test approved for R600a Refrigerant

DC Motor for greater start/stall torque

DC input or internally rectified AC

N.L. Speed: 24 RPM @ 120 VAC

Rated Speed/Torque: 15 RPM @ 40 in-lbs

Stall Torque: 200 in-lbs

Operating Temperature: -15 - 110°F

Housing Material: ABS 451 Plastic

Sealing: Ultrasonically welded

Insulation: Class B

MOLON MOTOR & COIL CORP.
THIS DOCUMENT IS PROPRIETARY TO MOLON
MOTOR & COIL CORPORATION AND MAY NOT
BE REPLICATED OR SHARED.

Patent# 8,201,478

Voltage: 12-110 VDC

N.L. Rate Speed: 24 RPM @ 120 VAC